

# 99 Series Quick Start Manual



This manual is applied to KP6299, KP6299A/B, KP6299C, KP8299, KP8299A/B, KP8299C, KP1299, KP1299A/B, KP1299C

- ▲** Plotter function: Moving the cursor upward or to change the setting.  
Sounder function: Moving the VRM upward.
- ◀** Plotter function: Move cursor to the left.  
Sounder function:  
Long Press - Activate SHIFT range function  
Short Press - activate the echoes history marker.
- ▶** Plotter function: Moving the cursor to the right.  
Sounder function:  
Long Press - Activate feeding rate selection for picture advancement.  
Short Press - activate the echoes history marker.
- MENU** Pressing it once displays the menu of the current page, pressing it twice enters the main menu.  
Plotter function : to turn track on/off  
Plotter + Sounder Function:  
Long press - Activates split ratio selection.  
Short Press - Displays the menu of the screen that has >50% screen coverage.
- MODE** Display the nine main screens circularly, turn over the listed interfaces.  
Plotter Function: Long press to change track color.  
Sounder Function: Long press to activate sonar mode selection.
- ESC** Withdraw from an optional operation, or display the previous page in reverse-cycle order.  
Long press: to activate graphic mode selection function.

**ENT/↵** Confirms the input or data.

Plotter function: Long Press - Activates Drawing Mark option.

Short Press - Activates waypoint attribute edit window.

Sounder function:

Long Press - To switch from manual gain to automatic gain and vice versa.

Short Press - To adjust gain level.

**⏏** Plotter and AIS Function: Enlarges the scale of the maps and charts.

Sounder Function: Short Press - Decreases the depth range for shallow waters.

Long Press - To switch between Manual and Auto range function.

**⏏** Plotter and AIS Function: Reduces the scale of the maps and charts.

Sounder Function: Short Press - Increases the depth range for deeper waters.

Long Press - To switch between Manual and Auto range function.

**F0** Plotter function: Display other functions (GOTO, tide table, search, etc.) menu.

Sounder function: Provides signal level selection. Eliminates low intensity echoes (up to light-blue echoes) each level.

**MOB** The MOB mark denotes man overboard position.

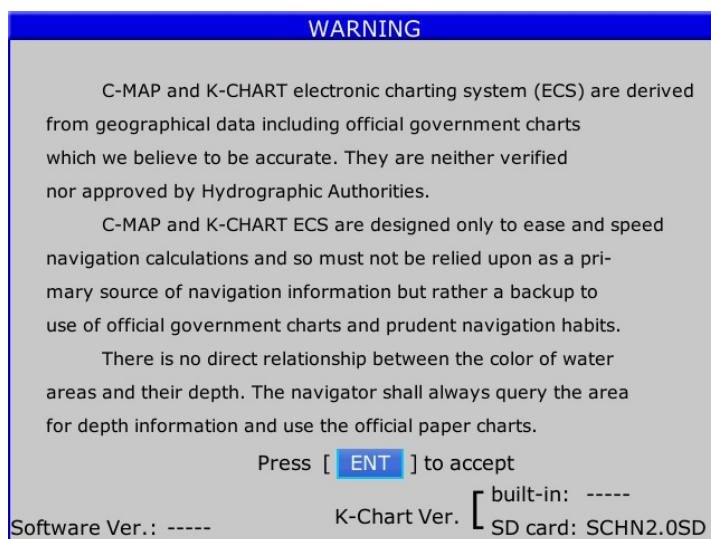
**⏻/☀** Long Press - Turn the power ON/OFF.

Short Press - Adjust the screen brightness and control panel dim.

## Turning ON and OFF Power

Turning on the power by press **⏻/☀** key, the unit beeps and displays the "ONWA" logo.

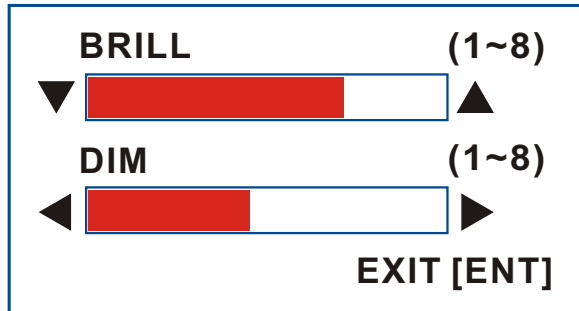
Wait for the unit totally boot up to show the below warning page and press [ENT] to enter working mode.



Turning off the power by press and hold **⏻/☀** until the screen goes off.

## Adjusting Brilliance and Dimmer

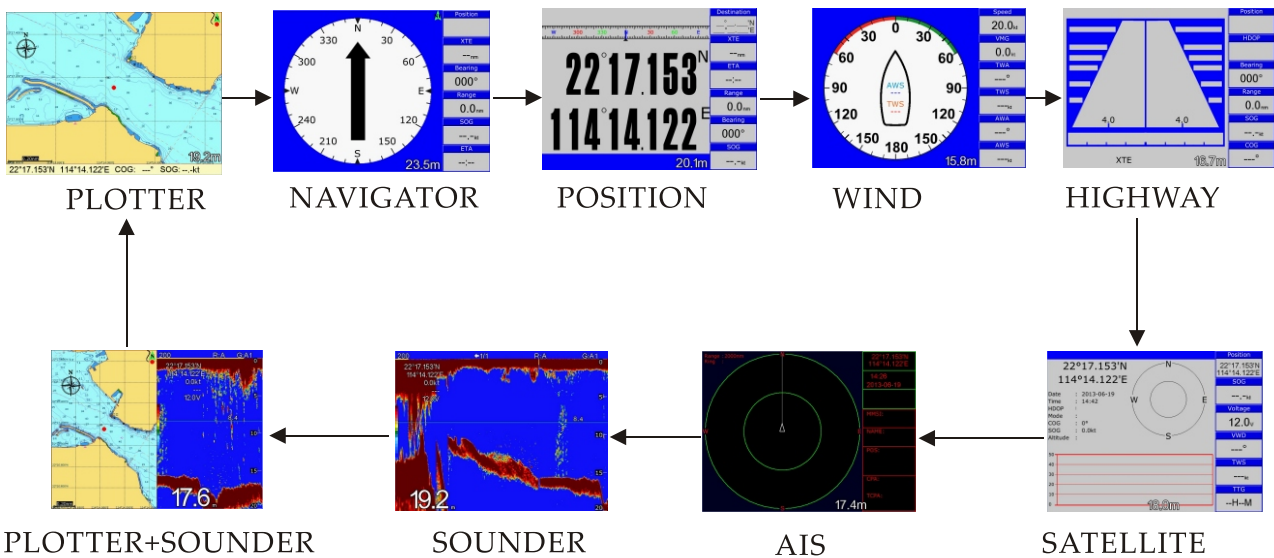
1. Press the [☀/☾] key. The adjusting window appears.



2. Press [▲] or [▼] to adjust LCD display brightness.
3. Press [▶] or [◀] to adjust keypad backlight.
4. Press the [ESC] key to confirm and exit.

## How to select display mode

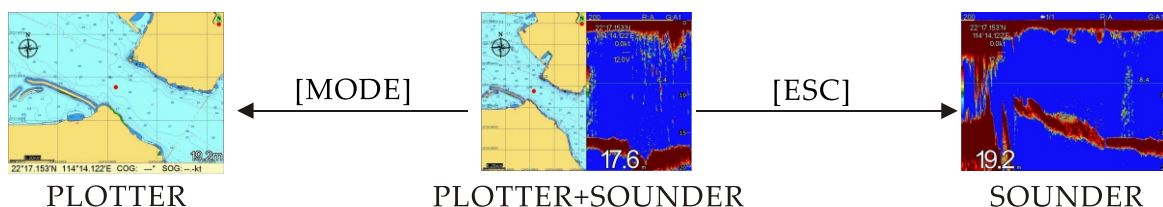
Selecting display modes by [MODE] and [ESC] key. Your unit has Nine display modes : PLOTTER, NAVIGATOR, POSITION, WIND, HIGHWAY, SOUNDER + PLOTTER, SOUNDER, AIS, SATELLITE.



Press the [MODE] key to choose a display mode. Each time the key is pressed, the display mode changes in the sequence shown above.

You can also press [ESC] key to choose a display mode in reverse sequence shown above.

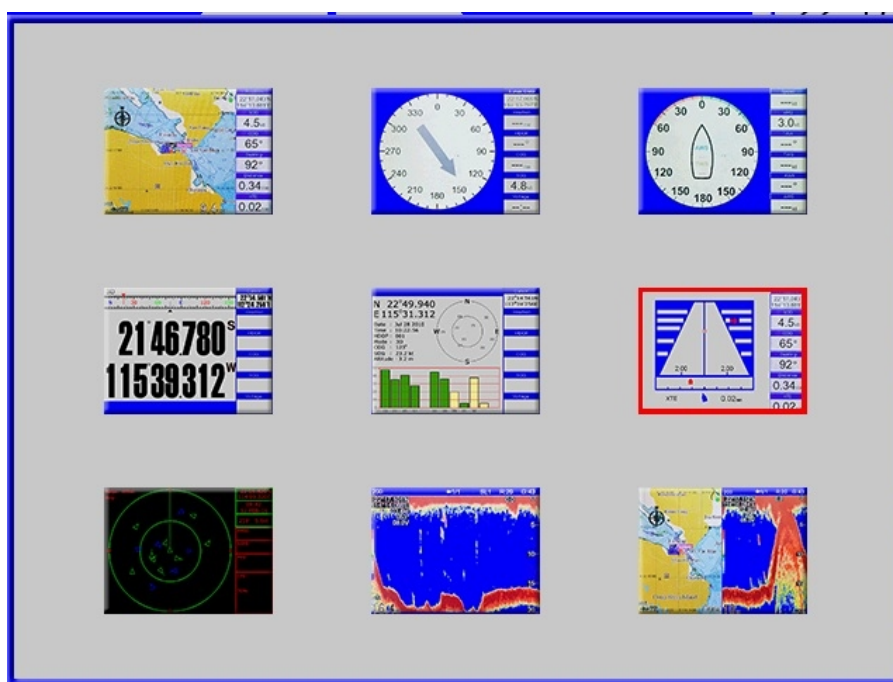
Example 1, if you are in PLOTTER + SOUNDER mode when you press [MODE] key the screen will go to PLOTTER mode.



Example 2, if you are in PLOTTER + SOUNDER mode when you press [ESC] key the screen will go to SOUNDER mode.

### Selecting display mode by Icons

When you long press [ESC] in any display mode an Icon selection window will appear as below.



You can use arrow keys to choose a display mode and press [ENT] to enter that display mode.

*Note : If some display modes cannot be selected (the Icon turns to grey color) please check SETUP menu whether this display mode is turned off.*

For more detail please download the full manual from <http://www.onwamarine.com>

 Please consider the environment before printing the manual