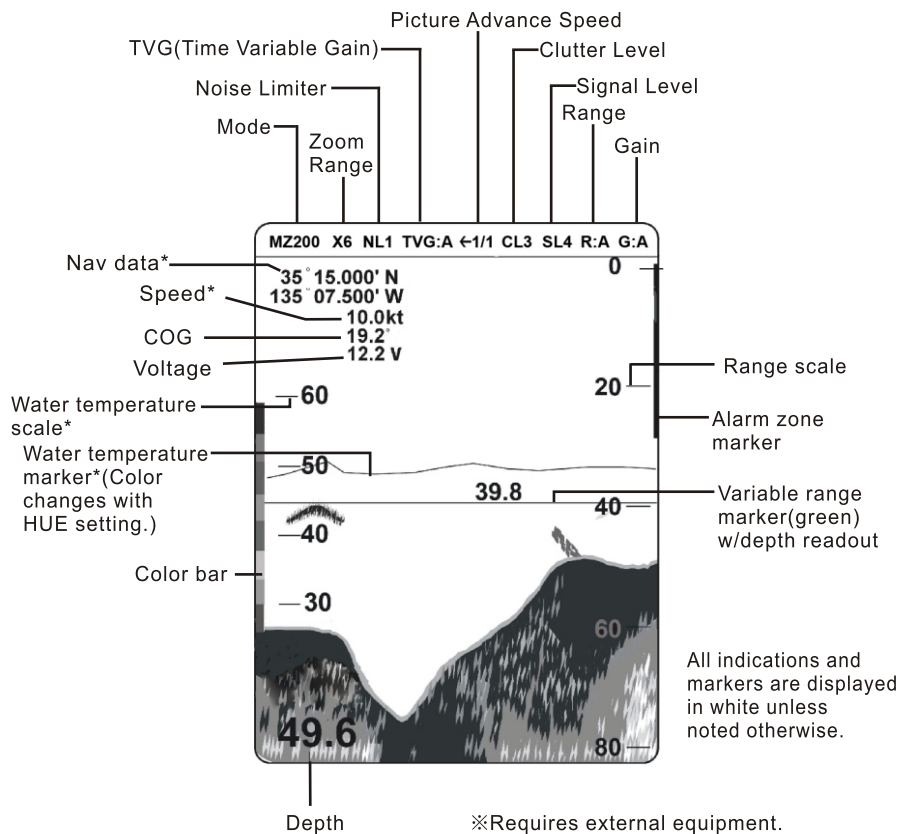


# KFish-7 Quick Start Manual



1. MENU: Displays Main Menu
2. MODE: Switches the display mode to 200 KHz, 50 KHz, 50/200 KHz, 200 KHz/zoom and 50 KHz/zoom
3. SHIFT: Shifts the depth without changing the range (Non-functional when “AUTO” is selected)
4. MARKER: Moves the marker up and down to measure the depth of certain object
5. ESC (Escape):
  - Closes the Main Menu
  - Changes the display mode in reverse direction.
  - Keeps the unit from saving unwanted adjustment changes
6. ENT (Enter):
  - Confirms adjustment changes
7. AUTO: Enables automatic Range and Gain Control (When “AUTO” is enabled, Shift, Range and Gain are inoperative)
8. SIG LEV (Signal level): Turns ON/OFF weak echo colors in the Color Bar
9. GAIN: Manually Adjusts the Sensitivity of the Signal Return
10. RANGE: Manually change the Depth Range
11. POWER/BRIGHTNESS:
  - Powers ON/OFF the unit
  - Adjusts the brightness of the screen and backlight of the keyboard
12. A-SCOPE: Press [ESC] and [ENT] at the same time to turn on/off the A-Scope display
13. ADVANCE: Press [SIG LEV] and [AUTO] at the same time to call out the picture advance speed menu.

# KFish-7 Quick Start Manual



## Power ON/OFF

Press [ ] once to turn on the unit.

Press and hold [ ] for 3 seconds to turn off the unit

## Auto Gain and Range

Press [AUTO] to turn ON the AUTO function (Automatic Gain and Automatic Range setting)

## Manual Gain

Turn the [Gain] knob to adjust the gain manually

## Manual Range

Press [ ] to change the depth range manually

## Modes selection

Press [Mode] to change the display mode from 200KHz -> 50KHz-> 50/200KHz -> 200KHz/zoom -> 50KHz/zoom

Press [ESC] to change the display mode in reverse direction from 50KHz/zoom-> 200KHz/zoom -> 50/200KHz -> 50KHz -> 200KHz

## Brightness adjustment

Momentarily press [ ] to call out the brightness control menu.

Press [ ] to adjust the display's brightness, press [ ] to adjust keypad brightness.